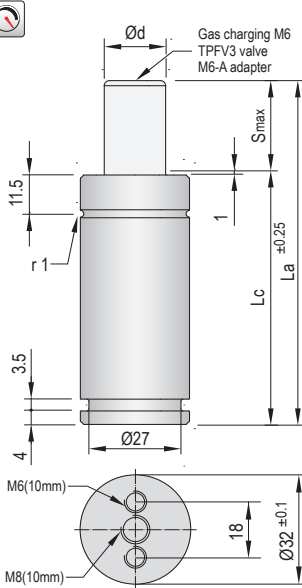


VDI SAFETY

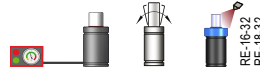


- i**
- MICRO
- TITAN
- TPH
- TPS
- TPSP
- TPF
- TPK
- TPC**

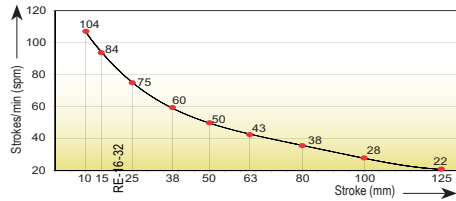


i Pressure medium **Nitrogen (N₂)**

Max. charging pressure	150 Bar
Min. charging pressure	35 Bar
Rod seal area	Ø16 - 2.01cm ² Ø18 - 2.54cm ²
Operating temperature	0°C - 80°C
Force increase by temperature	0,33 %/°C
Max. stem speed	1,6 m/s
Maintenance kit	Ø18mm - Kit C360.1/18 Ø16mm - Kit C360.1/16

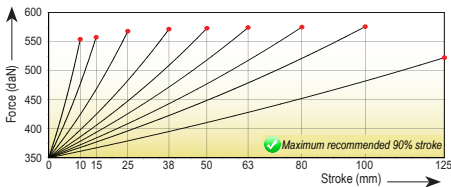


Maximum strokes / minute (at 20°C)

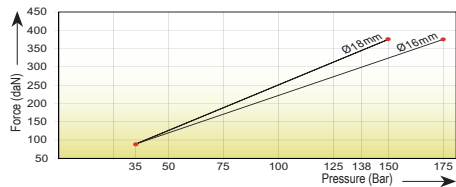


Code	Smax mm	La mm	Lc mm	Ød mm		Fa daN		F daN		Fc daN		P Bar	V l		Kg
TPC 350x10.1	10	70	60	18	350 ±5% (20°C)			520		550			0,007	0,28	
TPC 350x15.1	15	80	65	18			525	555		0,010		0,30			
TPC 350x25.1	25	100	75	18			535	565		0,017		0,32			
TPC 350x38.1	38	126	88	18			535	570	138	0,025		0,36			
TPC 350x50.1	50	150	100	18			537	570	(20°C)	0,033		0,40			
TPC 350x63.1	63	176	113	18			540	570		0,041		0,44			
TPC 350x80.1	80	210	130	18			540	575		0,052	0,50				
TPC 350x100.1	100	250	150	18			540	575		0,065	0,57				
TPC 350x125.1	125	300	175	16			500	520	175 (20°C)	0,076	0,65				

Force/stroke ratio



Initial force/charging pressure ratio



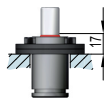
Assembly possibilities



DROP-IN



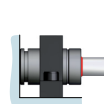
SCREWS



FS 32-FSC 32/1



FP 32-FPR 32



FI 32-FI 32/1